

## MAXI L1600



- ▶ Power source of the vacuum conveyor.
- ▶ High vacuum flow.
- ▶ Short response time.
- ▶ Compact size and low weight in comparison to conventional mechanical pumps.
- ▶ Regulator kit is included.

### Technical data

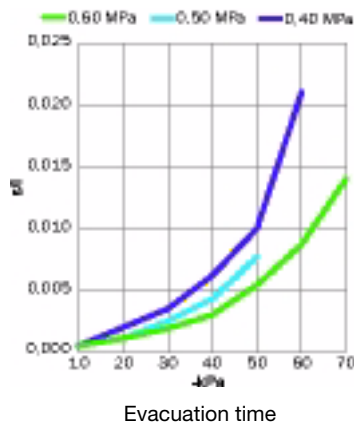
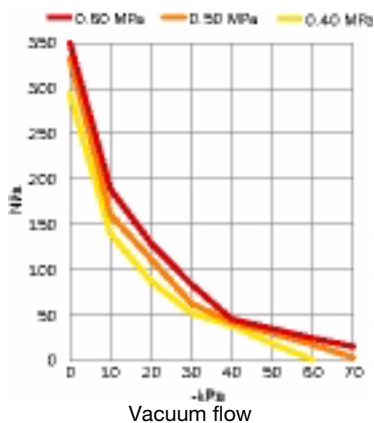
Description	Unit	Value
Feed pressure range	MPa	0.4–0.6
Air consumption range	NI/s	80–112
Vacuum range	-kPa	61–75
Noise level range	dBA	72–76
Material		Al, PPS, SS, NBR
Temperature range	°C	0–60
Weight	kg	19.5

### Vacuum flow

Feed pressure MPa	Air consumption NI/s	Vacuum flow (NI/s) at different vacuum levels (-kPa)								Max vacuum -kPa
		0	10	20	30	40	50	60	70	
0.6	112	350.0	189.0	129.5	84.0	45.5	35.0	24.5	15.4	75
0.5	96	332.5	161.0	112.0	63.0	42.0	30.1	17.5	3.5	71
0.4	80	294	140	87.5	52.5	38.5	18.9	0.7	–	61

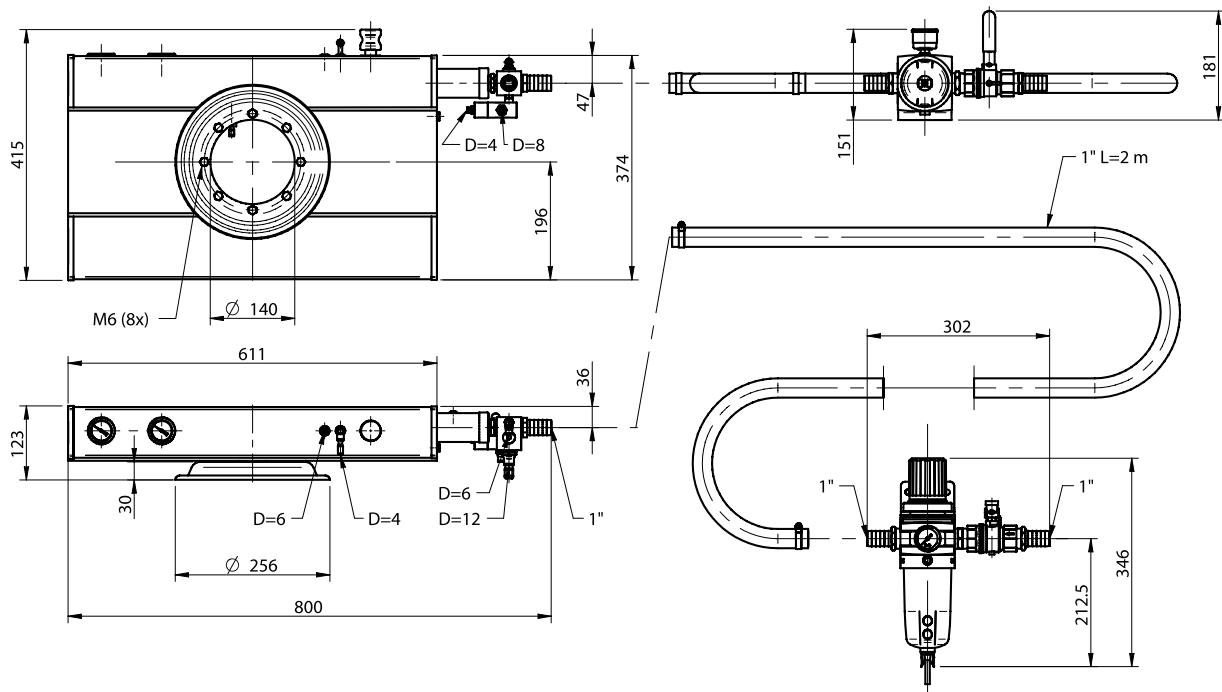
### Evacuation time

Feed pressure MPa	Air consumption NI/s	Evacuation time (s/l) at different vacuum levels (-kPa)							Max vacuum -kPa
		10	20	30	40	50	60	70	
0.6	112	0.0005	0.0011	0.0019	0.003	0.0054	0.0087	0.014	75
0.5	96	0.00048	0.0011	0.0022	0.0035	0.0062	0.010	0.021	71
0.4	80	0.0005	0.0011	0.0025	0.0043	0.0077	–	–	61



## Ordering information

Description	Art. No.
Pump unit MAXI L1600	0103883



Pump units

## Ordering information accessories

Description	Art. No.
Central exhaust MLL1600	3116019
Adapter MAXI L100-L1600 cpl	3102073