

PS6610 Si 32-3x2



- ▶ COAX® patented technology.
- ▶ Power source of the vacuum conveyor.
- ▶ High vacuum flow.
- ▶ Short response time.
- ▶ Compact size and low weight in comparison to conventional mechanical pumps.

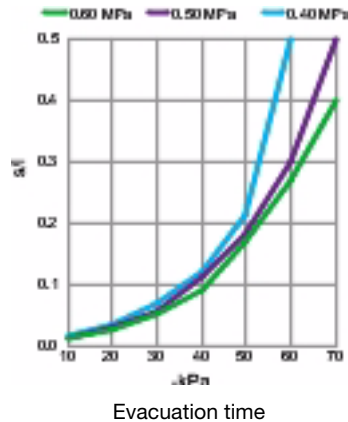
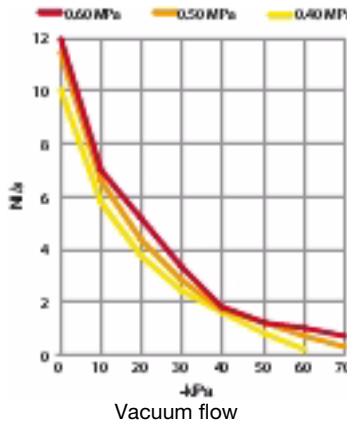
Technical data

Description	Unit	Value
Feed pressure range	MPa	0.4–0.6
Air consumption range	NI/s	2.5–3.5
Vacuum range	-kPa	61–75
Noise level	dB(A)	70–73
Material		AI, PA, NBR, PUR
Temperature range	°C	0–60
Weight	kg	1.94

Vacuum flow

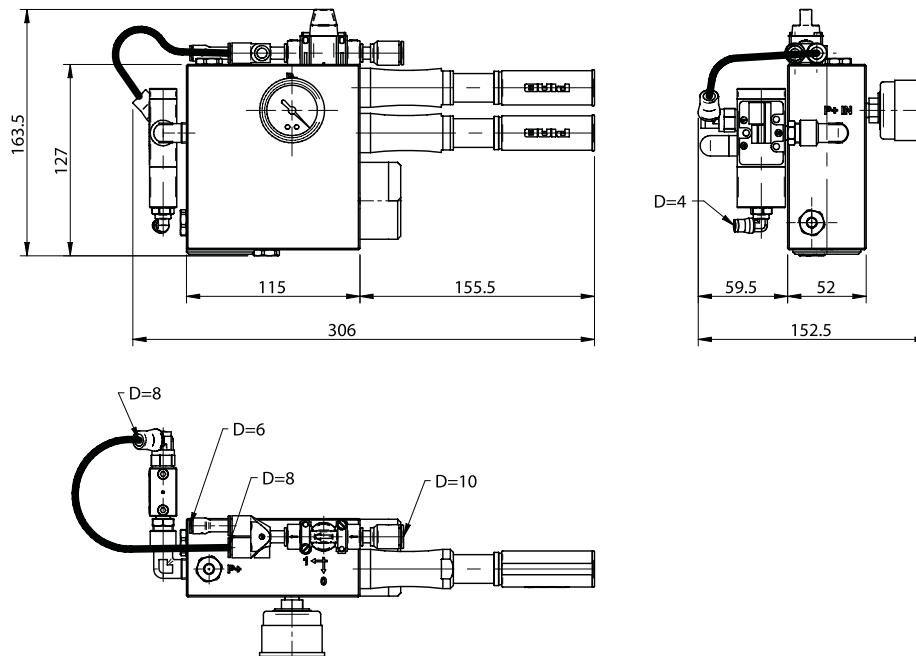
Feed pressure MPa	Air consumption NI/s	Vacuum flow (NI/s) at different vacuum levels (-kPa)								Max vacuum -kPa
		0	10	20	30	40	50	60	70	
0.40	2.5	10.0	5.8	3.8	2.4	1.6	0.80	0.20	—	60
0.50	3.0	11.4	6.6	4.4	2.8	1.7	1.2	0.70	0.36	70
0.60	3.5	12.0	7.0	5.2	3.4	1.8	1.2	1.0	0.70	75

Feed pressure MPa	Air consumption NI/s	Evacuation time (s/l) to reach different vacuum levels (-kPa)							Max vacuum -kPa
		10	20	30	40	50	60	70	
0.40	2.5	0.015	0.035	0.070	0.12	0.21	0.50	—	60
0.50	3.0	0.010	0.030	0.055	0.11	0.18	0.30	0.50	70
0.60	3.5	0.010	0.025	0.050	0.090	0.17	0.27	0.40	75



Ordering information

Description	Art. No.
Vacuum pump PS6610 with 2 cartridges	0117443



Pump units